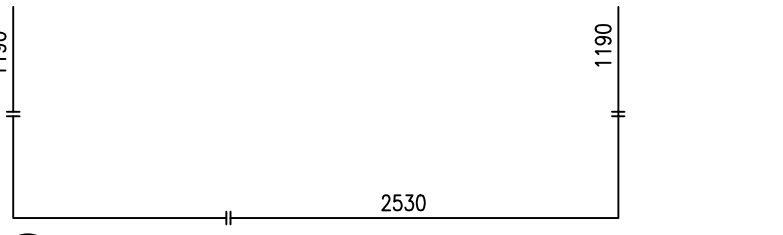


SO 527-036.01

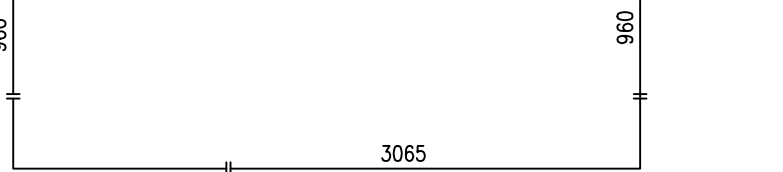
Výkres výstuže NK – výfah a výkaz výstuže

Výfah výstuže M1:25

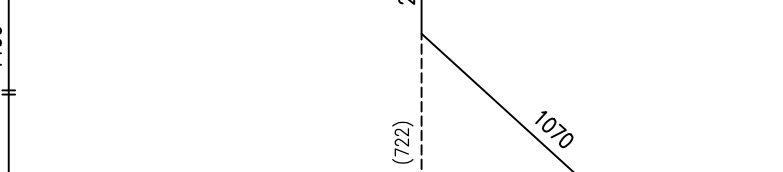
plotted dimensions at scheme scale



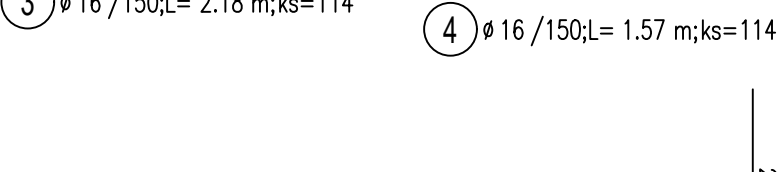
1 $\varnothing 16 / 150L = 4.91 \text{ m}; ks = 57$



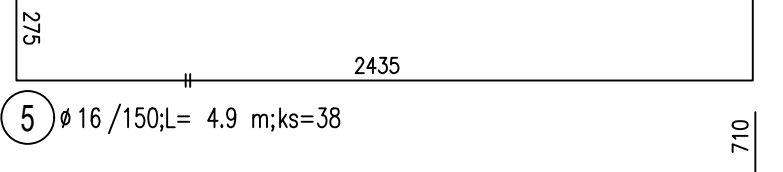
2 $\varnothing 16 / 150L = 4.99 \text{ m}; ks = 57$



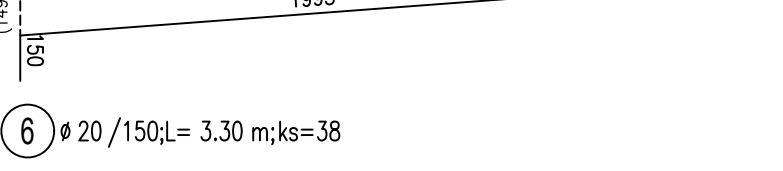
3 $\varnothing 16 / 150L = 2.18 \text{ m}; ks = 114$



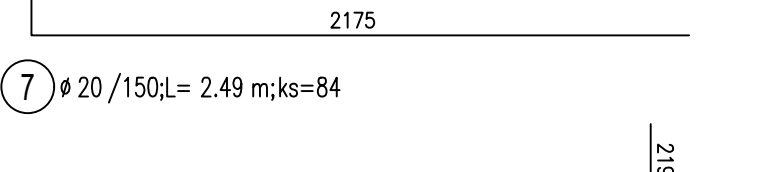
4 $\varnothing 16 / 150L = 1.57 \text{ m}; ks = 114$



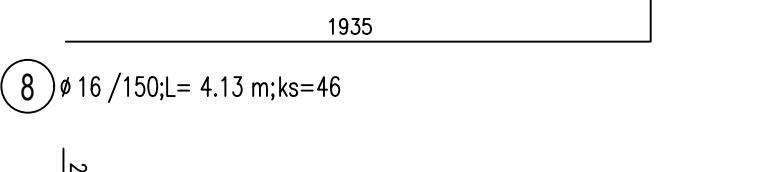
5 $\varnothing 16 / 150L = 4.9 \text{ m}; ks = 38$



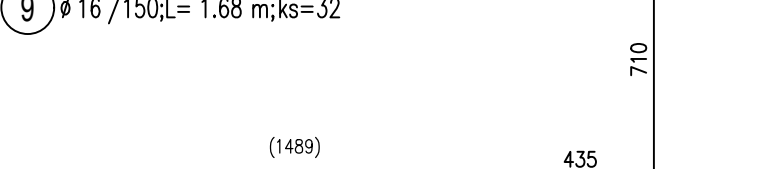
6 $\varnothing 20 / 150L = 3.30 \text{ m}; ks = 38$



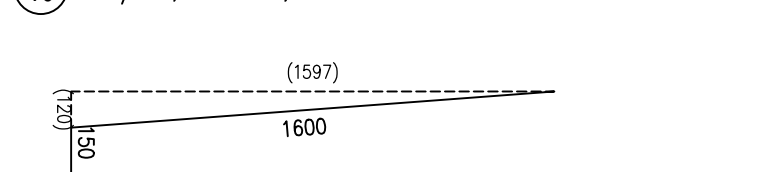
7 $\varnothing 20 / 150L = 2.49 \text{ m}; ks = 84$



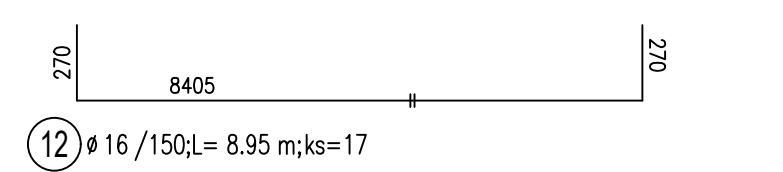
8 $\varnothing 16 / 150L = 4.13 \text{ m}; ks = 46$



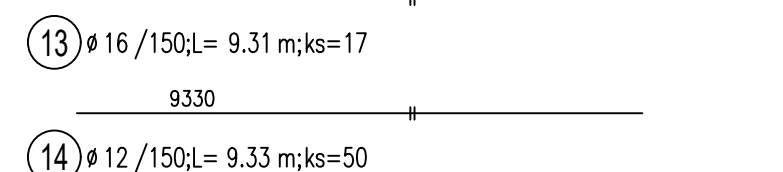
9 $\varnothing 16 / 150L = 1.68 \text{ m}; ks = 32$



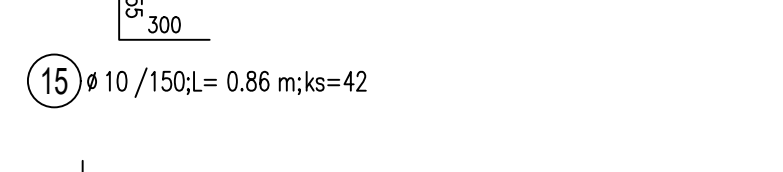
10 $\varnothing 20 / 150L = 2.64 \text{ m}; ks = 46$



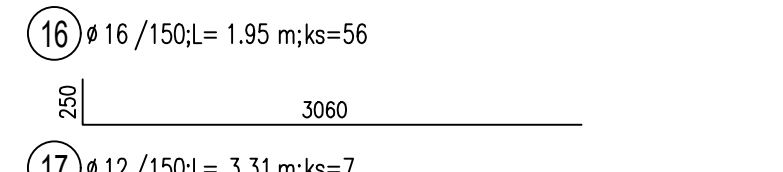
11 $\varnothing 16 / 150L = 1.75 \text{ m}; ks = 32$



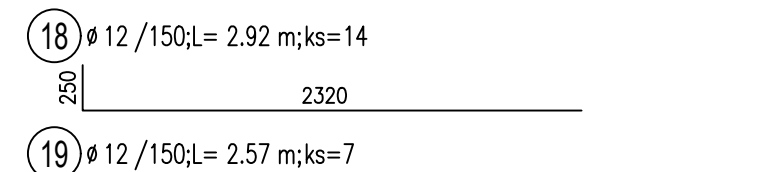
12 $\varnothing 16 / 150L = 8.95 \text{ m}; ks = 17$



13 $\varnothing 16 / 150L = 9.31 \text{ m}; ks = 17$



14 $\varnothing 12 / 150L = 9.33 \text{ m}; ks = 50$



15 $\varnothing 10 / 150L = 0.86 \text{ m}; ks = 42$

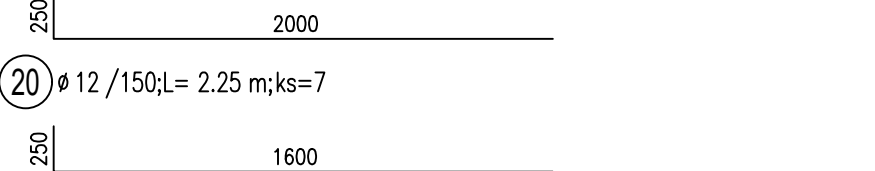


16 $\varnothing 16 / 150L = 1.95 \text{ m}; ks = 56$

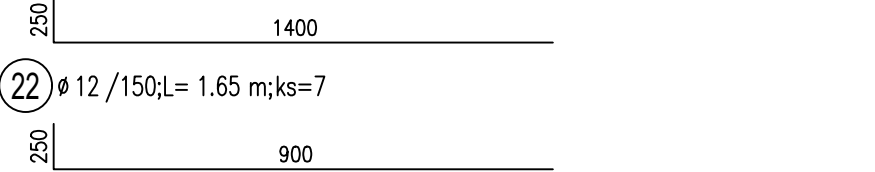
17 $\varnothing 12 / 150L = 3.31 \text{ m}; ks = 7$

18 $\varnothing 12 / 150L = 2.92 \text{ m}; ks = 14$

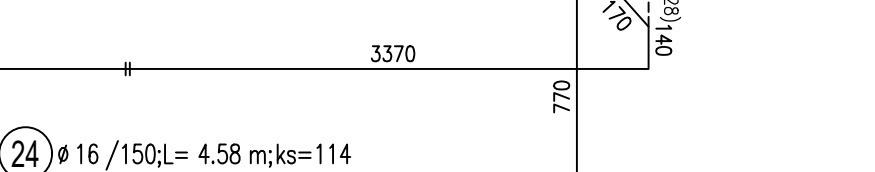
19 $\varnothing 12 / 150L = 2.57 \text{ m}; ks = 7$



20 $\varnothing 12 / 150L = 2.25 \text{ m}; ks = 7$



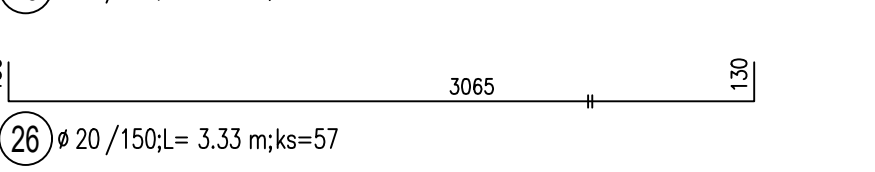
21 $\varnothing 12 / 150L = 1.85 \text{ m}; ks = 7$



22 $\varnothing 12 / 150L = 1.65 \text{ m}; ks = 7$



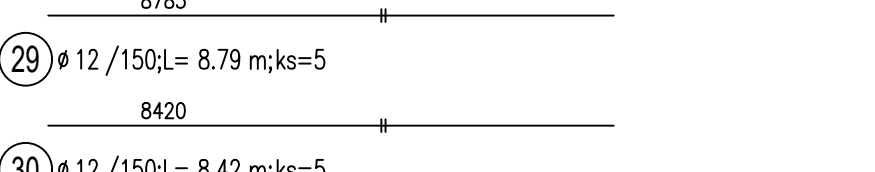
23 $\varnothing 12 / 150L = 1.15 \text{ m}; ks = 7$



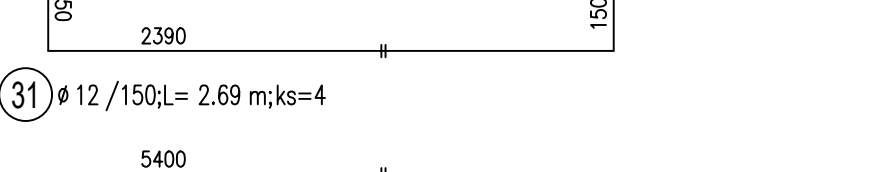
24 $\varnothing 16 / 150L = 4.58 \text{ m}; ks = 114$



25 $\varnothing 16 / 150L = 4.18 \text{ m}; ks = 114$



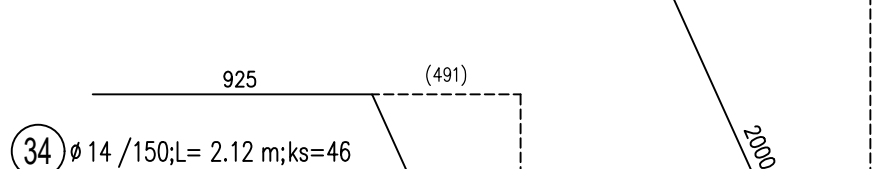
26 $\varnothing 20 / 150L = 3.33 \text{ m}; ks = 57$



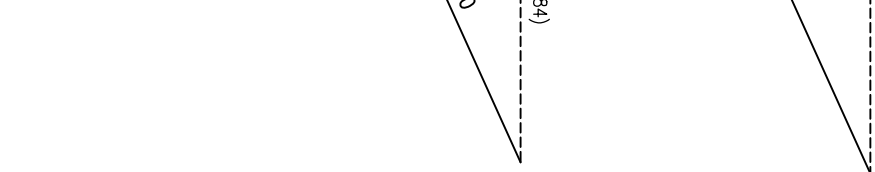
27 $\varnothing 16 / 150L = 1.48 \text{ m}; ks = 114$



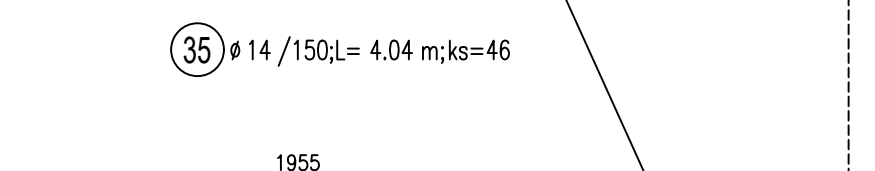
28 $\varnothing 16 / 150L = 2.82 \text{ m}; ks = 57$



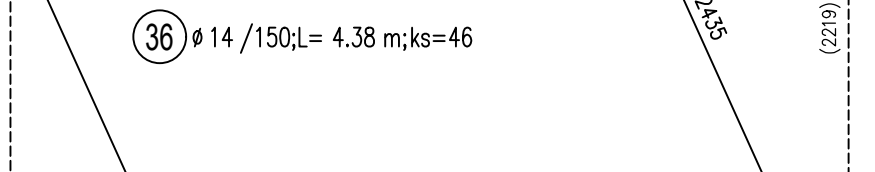
29 $\varnothing 12 / 150L = 8.79 \text{ m}; ks = 5$



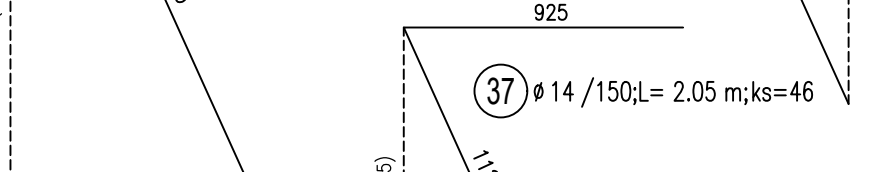
30 $\varnothing 12 / 150L = 8.42 \text{ m}; ks = 5$



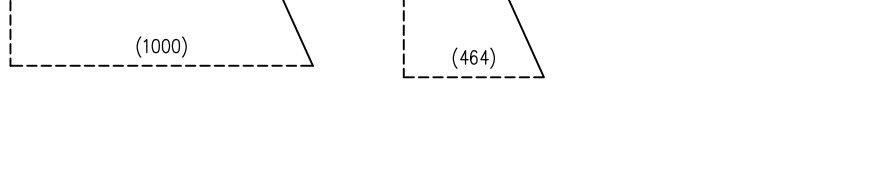
31 $\varnothing 12 / 150L = 2.69 \text{ m}; ks = 4$



32 $\varnothing 12 / 150L = 5.40 \text{ m}; ks = 94$



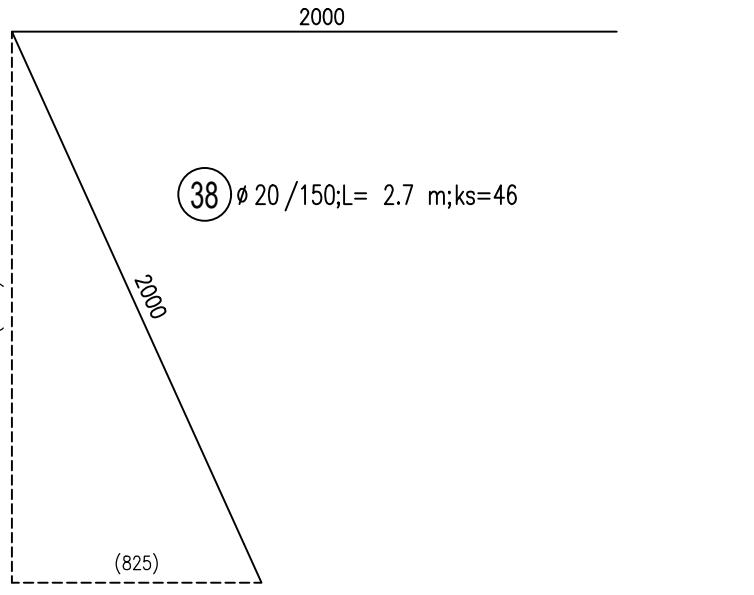
33 $\varnothing 20 / 150L = 4 \text{ m}; ks = 46$



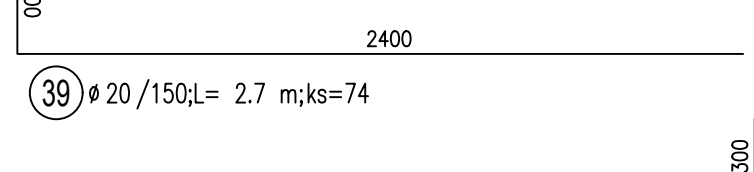
34 $\varnothing 14 / 150L = 2.12 \text{ m}; ks = 46$



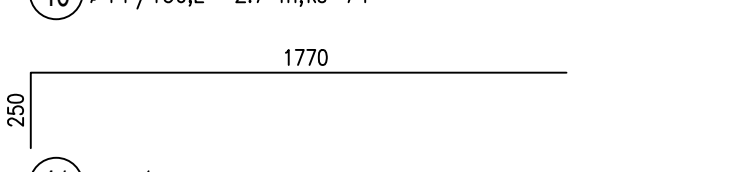
35 $\varnothing 14 / 150L = 4.04 \text{ m}; ks = 46$



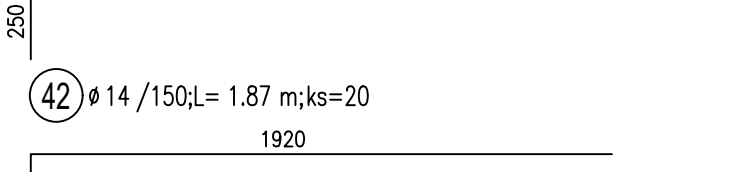
36 $\varnothing 20 / 150L = 2.7 \text{ m}; ks = 46$



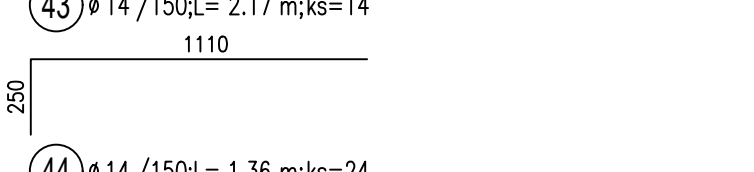
37 $\varnothing 20 / 150L = 2.7 \text{ m}; ks = 74$



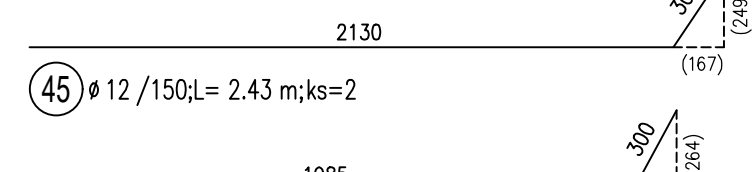
38 $\varnothing 14 / 150L = 2.7 \text{ m}; ks = 74$



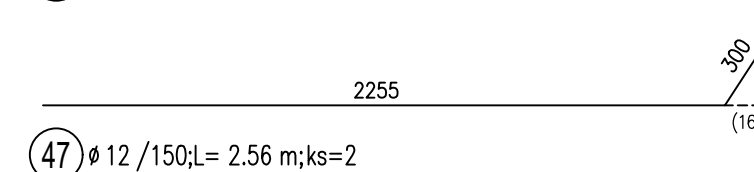
39 $\varnothing 14 / 150L = 2.02 \text{ m}; ks = 22$



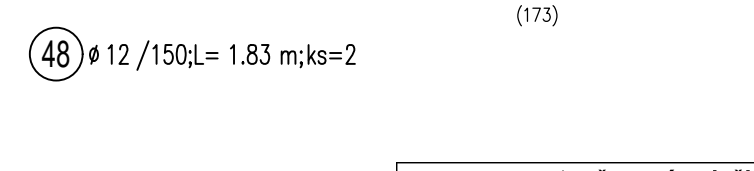
40 $\varnothing 14 / 150L = 1.87 \text{ m}; ks = 20$



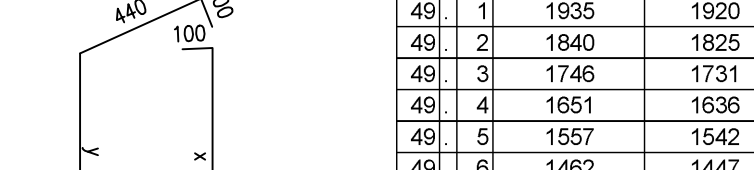
41 $\varnothing 14 / 150L = 2.17 \text{ m}; ks = 14$



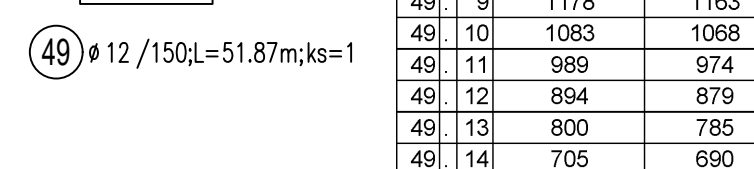
42 $\varnothing 14 / 150L = 1.36 \text{ m}; ks = 24$



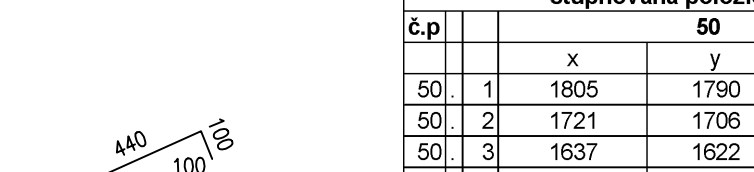
43 $\varnothing 12 / 150L = 2.43 \text{ m}; ks = 2$



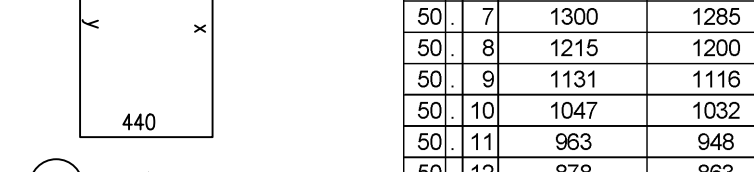
44 $\varnothing 12 / 150L = 2.29 \text{ m}; ks = 2$



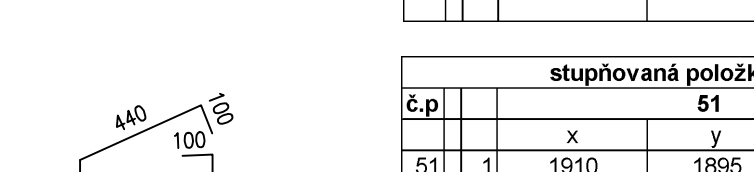
45 $\varnothing 12 / 150L = 2.56 \text{ m}; ks = 2$



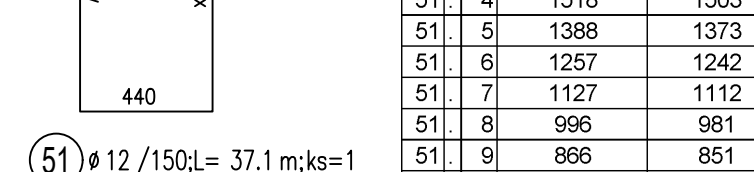
46 $\varnothing 12 / 150L = 1.83 \text{ m}; ks = 2$



47 $\varnothing 12 / 150L = 43.07 \text{ m}; ks = 1$



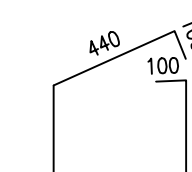
48 $\varnothing 12 / 150L = 51.87 \text{ m}; ks = 1$



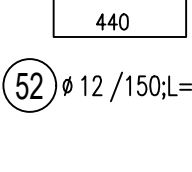
49 $\varnothing 12 / 150L = 50.12 \text{ m}; ks = 1$



50 $\varnothing 12 / 150L = 37.1 \text{ m}; ks = 1$



51 $\varnothing 12 / 150L = 71.74 \text{ m}; ks = 1$



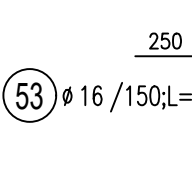
52 $\varnothing 12 / 150L = 71.74 \text{ m}; ks = 1$



53 $\varnothing 12 / 150L = 48.73 \text{ m}; ks = 1$



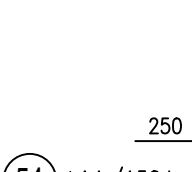
54 $\varnothing 14 / 150L = 48.73 \text{ m}; ks = 1$



55 $\varnothing 16 / 150L = 48.73 \text{ m}; ks = 1$



56 $\varnothing 14 / 150L = 43.07 \text{ m}; ks = 1$



57 $\varnothing 14 / 150L = 62.01 \text{ m}; ks = 1$

stupňovaná položka				
č.p.	x	y	L	
52	1	2410	2365	5885
52	2	2305	2291	5677
52	3	2202	2187	5469
52	4	2098	2083	5261
52	5	1994	1979	5053
52	6	1890	1875	4844
52	7	1786	1771	4636
52	8	1682	1667	4428
52	9	1578	1563	4220
52	10	1473	1458	4012
52	11	1369	1354	3804
52	12	1265	1250	3596
52	13	1161	1146	3388
52	14	1057	1042	3179
52	15	953	938	2971
52	16	849	834	2763
52	17	745	730	2555
				71740

stupňovaná položka					
p			53		
		x	L	kusov	L spolu
53	1	3870	4120	5	20600
53	2	3770	4020	1	4020
53	3	3546	3798	1	3798
53	4	3323	3573	1	3573
53	5	3099	3349	1	3349
53	6	2875	3125	1	3125
53	7	2651	2901	1	2901
53	8	2428	2678	1	2678
53	9	2204	2454	1	2454
53	10	1980	2230	1	2230
					48725

stupňovaná položka				
p			54	
		x	L	kusov
54	1	3870	4120	5
54	2	3770	4020	1
54	3	3546	3796	1
54	4	3323	3573	1
54	5	3099	3349	1
54	6	2875	3125	1
54	7	2651	2901	1
54	8	2428	2678	1
54	9	2204	2454	1
54	10	1980	2230	1
				48725

stupňovaná položka					
č.p.	55				
	X	L	kusov	L spolu	
55.	1	3620	3870	6	23220
55.	2	3420	3670	1	3670
55.	3	3142	3392	1	3392
55.	4	2863	3113	1	3113
55.	5	2585	2835	1	2835
55.	6	2307	2557	1	2557
55.	7	2028	2278	1	2278
55.	8	1750	2000	1	2000
					43065

stupňovaná položka					
č.p.	56				
	x	L	kusov	L spolu	
56	1	3620	3870	6	23220
56	2	3420	3670	1	3670
56	3	3142	3392	1	3392
56	4	2863	3113	1	3113
56	5	2585	2835	1	2835
56	6	2307	2557	1	2557
56	7	2028	2278	1	2278
56	8	1750	2000	1	2000
					43065

stupňovaná položka					
č.p.	57				
	X	L	kusov	Lspolu	
57.	1	2720	2970	12	35640
57.	2	2525	2775	2	5550
57.	3	2294	2544	2	5088
57.	4	2063	2313	2	4626
57.	5	1832	2082	2	4164
57.	6	1601	1851	2	3702
57.	7	1370	1620	2	3240
					62010

stupňovaná položka				
č.p.	49			
	x	y	L	
49	1	1935	1920	4935
49	2	1840	1825	4746
49	3	1746	1731	4557
49	4	1651	1636	4367
49	5	1557	1542	4178
49	6	1462	1447	3989
49	7	1367	1352	3800
49	8	1273	1258	3610
49	9	1178	1163	3421
49	10	1083	1068	3232
49	11	989	974	3043
49	12	894	879	2853
49	13	800	785	2664
49	14	705	690	2475
				51870